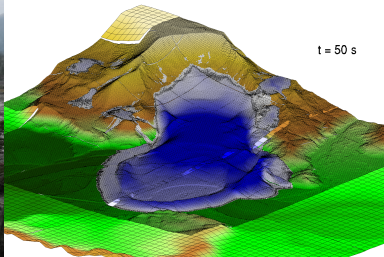


Debris Flows D-Claw→GeoClaw.

David George¹

¹Cascades Volcano Observatory, U.S. Geological Survey

Claw-Dev, UW, 2016



D-Claw features of more general use (GeoClaw)

D-Claw is built on GeoClaw 4.x :(

- More general initiation tools (DEM use for initial conditions) (qinit module)
- More general refinement criteria (flagging multiple levels based on flow conditions)
- Any aux variables can be treated like bathymetry (spatially varying) (aux module)
- NetCdf output
- GIS tools allow plotting/georeferencing of solution output
- eventually all of D-Claw will be a subset of GeoClaw 5.x